

# ANTICANCER RESEARCH

International Journal of Cancer Research and Treatment

ISSN: 0250-7005

## **Cytotoxic Components Against Human Oral Squamous Cell Carcinoma Isolated from *Andrographis paniculata***

RYUICHIRO SUZUKI<sup>1</sup>, YASUAKI MATSUSHIMA<sup>1</sup>, NORIYUKI OKUDAIRA<sup>2</sup>,  
HIROSHI SAKAGAMI<sup>2</sup> and YOSHIAKI SHIRATAKI<sup>1</sup>

<sup>1</sup>*Faculty of Pharmaceutical Sciences, Josai University, Sakado, Japan;*

<sup>2</sup>*Division of Pharmacology, Meikai University School of Dentistry, Sakado, Japan*

*Reprinted from*

ANTICANCER RESEARCH 36: 5931-5936 (2016)

# ANTICANCER RESEARCH

International Journal of Cancer Research and Treatment



ISSN (print): 0250-7005  
ISSN (online): 1791-7530

## Editorial Board

**P. A. ABRAHAMSSON**, Malmö, Sweden  
**B. B. AGGARWAL**, Houston, TX, USA  
**T. AKIMOTO**, Kashiwa, Chiba, Japan  
**P. Z. ANASTASIADIS**, Jacksonville, FL, USA  
**A. ARGIRIS**, San Antonio, TX, USA  
**J. P. ARMAND**, Toulouse, France  
**V. I. AVRAMIS**, Los Angeles, CA, USA  
**R. C. BAST**, Houston, TX, USA  
**D.-T. BAU**, Taichung, Taiwan, ROC  
**G. BAUER**, Freiburg, Germany  
**E. E. BAULIEU**, Le Kremlin-Bicetre, France  
**E. J. BENZ, Jr.**, Boston, MA, USA  
**J. BERGH**, Stockholm, Sweden  
**F. T. BOSMAN**, Lausanne, Switzerland  
**G. BROICH**, Monza, Italy  
**Ø. S. BRULAND**, Oslo, Norway  
**J. M. BUATTI**, Iowa City, IA, USA  
**M. M. BURGER**, Basel, Switzerland  
**M. CARBONE**, Honolulu, HI, USA  
**C. CARLBERG**, Kuopio, Finland  
**J. CARLSSON**, Uppsala, Sweden  
**A. F. CHAMBERS**, London, ON, Canada  
**P. CHANDRA**, Frankfurt am Main, Germany  
**L. CHENG**, Indianapolis, IN, USA  
**J.-G. CHUNG**, Taichung, Taiwan, ROC  
**E. DE CLERCQ**, Leuven, Belgium  
**W. DEN OTTER**, Amsterdam, The Netherlands  
**E. P. DIAMANDIS**, Toronto, ON, Canada  
**G. TH. DIAMANDOPOULOS**, Boston, MA, USA  
**D. W. FELSHER**, Stanford, CA, USA  
**J. A. FERNANDEZ-POL**, Chesterfield, MO, USA  
**I. J. FIDLER**, Houston, TX, USA  
**A. P. FIELDS**, Jacksonville, FL, USA  
**B. FUCHS**, Zurich, Switzerland  
**D. FUCHS**, Innsbruck, Austria  
**G. GABBIANI**, Geneva, Switzerland  
**R. GANAPATHI**, Charlotte, NC, USA  
**A. F. GAZDAR**, Dallas, TX, USA  
**J. H. GESCHWIND**, Baltimore, MD, USA  
**A. GIORDANO**, Philadelphia, PA, USA  
**G. GITSCH**, Freiburg, Germany  
**R. H. GOLDFARB**, Guilford, CT, USA  
**L. HELSON**, Quakertown, PA, USA  
**R. M. HOFFMAN**, San Diego, CA, USA  
**S. C. JHANWAR**, New York, NY, USA  
**J. V. JOHANNESSEN**, Oslo, Norway  
**B. KAINA**, Mainz, Germany  
**P. -L. KELLOKUMPU-LEHTINEN**, Tampere, Finland  
**D. G. KIEBACK**, Schleswig, Germany  
**R. KLAPDOR**, Hamburg, Germany  
**S. D. KOTTARIDIS**, Athens, Greece  
**G. R. F. KRUEGER**, Köln, Germany  
**Pat M. KUMAR**, Manchester, UK

**Shant KUMAR**, Manchester, UK  
**O. D. LAERUM**, Bergen, Norway  
**F. J. LEJEUNE**, Lausanne, Switzerland  
**L. F. LIU**, Piscataway, NJ, USA  
**D. M. LOPEZ**, Miami, FL, USA  
**E. LUNDGREN**, Umeå, Sweden  
**Y. MAEHARA**, Fukuoka, Japan  
**J. MAHER**, London, UK  
**J. MARESCAUX**, Strasbourg, France  
**J. MARK**, Skövde, Sweden  
**S. S. MARTIN**, Baltimore, MD, USA  
**S. MITRA**, Houston, TX, USA  
**S. MIYAMOTO**, Fukuoka, Japan  
**M. MUELLER**, Villingen-Schwenningen, Germany  
**F. M. MUGGIA**, New York, NY, USA  
**M. NAMIKI**, Kanazawa, Ishikawa, Japan  
**R. NARAYANAN**, Boca Raton, FL, USA  
**K. NILSSON**, Uppsala, Sweden  
**S. PATHAK**, Houston, TX, USA  
**J.L. PERSSON**, Malmö, Sweden  
**G. J. PILKINGTON**, Portsmouth, UK  
**C. D. PLATSOUCAS**, Norfolk, VA, USA  
**A. POLLIACK**, Jerusalem, Israel  
**M. RIGAUD**, Limoges, France  
**U. RINGBORG**, Stockholm, Sweden  
**M. ROSELLI**, Rome, Italy  
**A. SCHAUER**, Göttingen, Germany  
**M. SCHNEIDER**, Wuppertal, Germany  
**A. SETH**, Toronto, ON, Canada  
**G. V. SHERBET**, Newcastle-upon-Tyne, UK  
**G.-I. SOMA**, Kagawa, Japan  
**G. S. STEIN**, Burlington, VT, USA  
**T. STIGBRAND**, Umeå, Sweden  
**T. M. THEOPHANIDES**, Athens, Greece  
**P. M. UELAND**, Bergen, Norway  
**H. VAN VLIERBERGHE**, Ghent, Belgium  
**R. G. VILE**, Rochester, MN, USA  
**M. WELLER**, Zurich, Switzerland  
**B. WESTERMARK**, Uppsala, Sweden  
**Y. YEN**, Duarte, CA, USA  
**M.R.I. YOUNG**, Charleston, SC, USA  
**B. ZUMOFF**, New York, NY, USA

**J. G. DELINASIOS**, Athens, Greece  
Managing Editor

**G. J. DELINASIOS**, Athens, Greece  
Assistant Managing Editor and  
Executive Publisher

**E. ILIADIS**, Athens, Greece  
Production Editor

**Editorial Office:** International Institute of Anticancer Research, 1st km Kapandritiou-Kalamou Rd., Kapandriti, P.O. Box 22, Attiki 19014, Greece. Tel / Fax: +30-22950-53389.

**U.S. Branch:** Anticancer Research USA, Inc., 111 Bay Avenue, Highlands, NJ 07732, USA.

E-mails: Editorial Office: journals@iia-anticancer.org

Managing Editor: editor@iia-anticancer.org

ANTICANCER RESEARCH supports: (a) the establishment and the activities of the INTERNATIONAL INSTITUTE OF ANTICANCER RESEARCH (IIAR; Kapandriti, Attiki, Greece); and (b) the organization of the International Conferences of Anticancer Research. The IIAR is a member of UICC. For more information about ANTICANCER RESEARCH, IIAR and the Conferences, please visit the IIAR website: [www.iia-anticancer.org](http://www.iia-anticancer.org)

**Publication Data:** ANTICANCER RESEARCH (AR) is published monthly from January 2009. Each annual volume comprises 12 issues. Annual Author and Subject Indices are included in the last issue of each volume. ANTICANCER RESEARCH Vol. 24 (2004) and onwards appears online with Stanford University HighWire Press from April 2009.

**Copyright:** On publication of a manuscript in AR, which is a copyrighted publication, the legal ownership of all published parts of the paper passes from the Author(s) to the Journal.

**Annual Subscription Rates 2016 per volume:** Institutional subscription US\$ 1,898.00 (online) or US\$ 2,277.00 (print & online). Personal subscription US\$ 897.00 (online) or US\$ 1,277.00 (print & online). Prices include rapid delivery and insurance. The complete previous volumes of Anticancer Research (Vol. 1-35, 1981-2015) are available at 50% discount on the above rates.

**Subscription Orders:** Orders can be placed at agencies, bookstores, or directly with the Publisher. (e-mail: [subscriptions@iia-anticancer.org](mailto:subscriptions@iia-anticancer.org))

**Advertising:** All correspondence and rate requests should be addressed to the Editorial Office.

**Book Reviews:** Recently published books and journals should be sent to the Editorial Office. Reviews will be published within 2-4 months.

Articles in ANTICANCER RESEARCH are regularly indexed in all bibliographic services, including Current Contents (Life Sciences), Science Citation Index, Index Medicus, Biological Abstracts, PubMed, Chemical Abstracts, Excerpta Medica, University of Sheffield Biomedical Information Service, Current Clinical Cancer, AIDS Abstracts, Elsevier Bibliographic Database, EMBASE, Compendex, GEOBASE, EMBiology, Elsevier BIOBASE, FLUIDEX, World Textiles, Scopus, Progress in Palliative Care, Cambridge Scientific Abstracts, Cancergram (International Cancer Research Data Bank), MEDLINE, Reference Update - RIS Inc., PASCAL-CNRS, Inpharma-Reactions (Datastar, BRS), CABS, Immunology Abstracts, Telegen Abstracts, Genetics Abstracts, Nutrition Research Newsletter, Dairy Science Abstracts, Current Titles in Dentistry, Inpharma Weekly, BioBase, MedBase, CAB Abstracts/Global Health Databases, Investigational Drugs Database, VINITI Abstracts Journal, Leeds Medical Information, PubsHub, Sociedad Iberoamericana de Información Científica (SIIC) Data Bases.

Authorization to photocopy items for internal or personal use, or the internal or personal clients, is granted by ANTICANCER RESEARCH, provided that the base fee of \$2.00 per copy, plus 0.40 per page is paid directly to the Copyright Clearance Center, 27 Congress Street, Salem, MA 01970, USA. For those organizations that have been granted a photocopy license by CCC, a separate system of payment has been arranged. The fee code for users of the Transactional Reporting Service is 0250-7005/2016 \$2.00 +0.40.

The Editors and Publishers of ANTICANCER RESEARCH accept no responsibility for the opinions expressed by the contributors or for the content of advertisements appearing therein.

Copyright© 2016, International Institute of Anticancer Research (Dr. John G. Delinasios), All rights reserved.

D.T.P. BY IIAR

PRINTED BY ENTYP0, ATHENS, GREECE. PRINTED ON ACID-FREE PAPER

# Cytotoxic Components Against Human Oral Squamous Cell Carcinoma Isolated from *Andrographis paniculata*

RYUICHIRO SUZUKI<sup>1</sup>, YASUAKI MATSUSHIMA<sup>1</sup>, NORIYUKI OKUDAIRA<sup>2</sup>,  
HIROSHI SAKAGAMI<sup>2</sup> and YOSHIAKI SHIRATAKI<sup>1</sup>

<sup>1</sup>Faculty of Pharmaceutical Sciences, Josai University, Sakado, Japan;

<sup>2</sup>Division of Pharmacology, Meikai University School of Dentistry, Sakado, Japan

**Abstract.** *Background:* The 5-year survival rate of patients with oral cancer has remained approximately 50% during the past 30 years, possibly due to the poor tumor selectivity of conventional anticancer drugs. This prompted us to search for new candidates for anticancer drugs that have higher cytotoxicity and tumor selectivity. *Materials and Methods:* Dried leaves of *Andrographis paniculata* were supplied from a market in Shanghai. The methanolic fraction of *A. paniculata* was further fractionated to identify cytotoxic principles by spectroscopic analysis and comparison with literature values. Viable cell number was determined by the 3-[4,5-dimethylthiazol-2-yl]-2,5-diphenyltetrazolium bromide method, and tumor specificity was calculated by relative cytotoxicity against oral squamous cell carcinoma cell lines compared to that against normal oral cells. Apoptosis induction was detected by cleaved poly (ADP-ribose) polymerase and caspase-3 on western blot analysis. *Results:* Major cytotoxicity in the methanol extract of a leaf of *A. paniculata* was recovered by partitioning with EtOAc, followed by silica gel chromatography. Further purification with reversed-phase high-performance liquid chromatography led to isolation of four known cytotoxic compounds, 14-deoxyandrographolide, andrographolide, neoandrographolide and deoxyandrographiside. Among them, andrographolide had the greatest cytotoxicity and tumor specificity, also inducing caspase-3 activation of HSC-2 oral squamous cell carcinoma cells. *Conclusion:* The present study identified andrographolide as a major antitumor principle in the methanolic extract of leaves of *A. paniculata*.

*Correspondence to:* Professor Yoshiaki Shirataki, Faculty of Pharmaceutical Sciences, Josai University, 1-1 Keyakidai, Sakado, Saitama 350-0295, Japan. Tel: +81 492717053, Fax: +81 492717984, e-mail: shiratak@josai.ac.jp

*Key Words:* *Andrographis paniculata*, cytotoxicity, human oral squamous cell carcinoma.

Head and neck cancer is the sixth most common malignancy, compromising approximately 6% of all cancer cases (1), and mostly comprised of heterogeneous populations of oral squamous cell carcinomas (1, 2). At the early stage of oral cancer progression, surgery and radiation are the most popular choice of antitumor treatment (2), but they may cause disfiguring and psychological trauma in patients. Therefore, the development of new treatment strategies and the early diagnosis of oral cancer are of great importance (3). We have initiated a series of studies to search for new natural substances for the treatment of oral cancer, using an *in vitro* evaluation system with human oral squamous cell carcinoma cell lines (HSC-2, HSC-3 and HSC-4) and human normal oral cells (gingival fibroblast, HGF; periodontal ligament fibroblast, HPLF; pulp cell, HPC). Since the methanolic extract of *Andrographis paniculata* was found to have relatively higher cytotoxic activity, we isolated and identified the cytotoxic principles present in this extract, and also investigated the possibility of apoptosis induction of HSC-2 cells by compound isolated from this extract.

## Materials and Methods

*Materials.* The following chemicals and reagents were obtained from the indicated companies: Dulbecco's modified Eagle's medium (DMEM; Gibco BRL, Grand Island, NY, USA); fetal bovine serum (FBS; JRH Bioscience, Lenexa, KS, USA); 5-fluorouracil (5-FU; Kyowa, Tokyo, Japan); doxorubicin hydrochloride (Wako Pure Chem. Ind., Osaka, Japan); dimethyl sulfoxide (DMSO; Wako Pure Chem. Ind.); DMSO-*d*<sub>6</sub>, CD<sub>3</sub>OD (Cambridge Isotope Laboratories, Inc., MA, USA) and pyridine-*d*<sub>5</sub> (ACROS organics, Geel, Belgium); silica gel (Fuji Silysia Chemical LTD., Aichi, Japan) and silica gel plate (Merck KGaA, Darmstadt, Germany). Protease and phosphatase inhibitors were purchased from Roche Diagnostics (Tokyo, Japan).

Antibodies against cleaved caspase-3 (Cell Signaling Technology Inc., Beverly, Maryland), poly (ADP-ribose) polymerase (PARP) (Cell Signaling Technology Inc.) and glyceraldehyde 3-phosphate dehydrogenase (GAPDH; Trevigen, Gaithersburg, MD, USA) were used as primary antibodies. As secondary antibodies, we used  $\alpha$ -rabbit IgG (DAKO Japan) antibodies which were conjugated with horseradish peroxidase.

**General experimental procedures.** Nuclear magnetic resonance (NMR) spectra were measured on a 400 MHz Agilent-400MR-nmrs 400 spectrometer (Agilent Technologies, Santa Clara, CA, USA) at room temperature using standard pulse sequences. Electron ionization-mass spectra (EI-MS) were measured with a JEOL JMN 700 spectrometer (JEOL Ltd., Tokyo, Japan). Electrospray ionization (ESI)-MS was also measured with an API4000-QTRP (AB SCIEX, CA, USA). Open column chromatography was performed on silica gel. High-performance liquid chromatography (HPLC) was performed with Senshu Pak ODS column (4.6 mm i.d. × 150 mm for analysis, 10 mm i.d. × 250 mm for preparation; Senshu Scientific Co., Ltd., Tokyo, Japan). AQUASIL SP100 (10 mm i.d. × 250 mm; Senshu Scientific Co., Ltd.) was also used as preparative column for HPLC purification.

**Plant materials.** The dried leaves of *A. paniculata* were supplied from a market in Shanghai. The specimen was proven and identified by Dr. Y. Shirataki and voucher specimens (#20140521) were also deposited in the Department of Pharmacognosy and Natural Medicines of Josai University.

**Preparation of methanolic extract.** Methanolic extract of leaves of *A. paniculata* (3 kg) was prepared by extraction with MeOH under reflux for 3 h. This extract was completely dried *in vacuo* to give the corresponding dried extract (146 g).

**Isolation of components from methanolic extract.** The methanolic extract was suspended in water, then extracted with EtOAc and *n*-BuOH, successively. Each soluble portion was evaporated *in vacuo* to give EtOAc (57.2 g) and *n*-BuOH (43.1 g) fractions, respectively. The EtOAc fraction was chromatographed on a silica gel column by step-wise elution with a CHCl<sub>3</sub>-MeOH mixture (CHCl<sub>3</sub>: MeOH=100:1 → 1:1 → 1:3) to give three fractions (Fr 1-3). Fr 2 (31.2 g) was further purified with silica gel open-column chromatography eluting with CHCl<sub>3</sub>-MeOH mixture (CHCl<sub>3</sub>: MeOH=100:1 → 50:1 → 30:1 → 15:1 → 7:1 → 3:1 → 0:1) to provide seven further fractions (Fr. 2-1-2-7). Fr. 2-1 (0.92 g) and Fr. 2-2 (1.4 g) combined with Fr. 2-3 (1.0 g) were purified by reversed-phase HPLC, eluting with a MeCN-H<sub>2</sub>O mixture, to afford compound **1** (87.8 mg) and **2** (123.8 mg) respectively. Fr. 2-4 (1.5 g) was subjected to reversed-phase HPLC using aqueous MeCN as solvent system to give compound **3** (21.4 mg). Fr. 2-5 (2.8 g) was rechromatographed on silica gel open column eluting with CHCl<sub>3</sub>-MeOH mixture (CHCl<sub>3</sub>: MeOH=6:1 → 3:1 → 0:1) to provide three fractions (Fr. 2-5-1 – 2-5-3). Fr. 2-5-1 was purified with HPLC (AQUASIL SP100, 10 mm i.d. × 250 mm, CHCl<sub>3</sub>-MeOH mixture) to give compound **4** (54.3 mg).

**Cell culture.** Human oral squamous cell carcinoma cell lines (HSC-2, HSC-3, HSC-4) were purchased from Riken Cell Bank (Tsukuba, Ibaraki, Japan). Normal human oral cells, HGF, HPLF and HPC were prepared from periodontal tissues, according to the guideline of the Intramural Ethic Committee (No. A0808), after obtaining informed consent from the 12-year-old patient at the Meikai University Hospital (4). Since normal oral cells have a limited lifespan of 43-47 population doubling levels (PDL) (4), they were used at 8-15 PDL in this study. All the cells were cultured in DMEM supplemented with 10% heat-inactivated FBS, 100 U/ml penicillin G and 100 µg/ml streptomycin sulfate. The normal cells were detached by 0.25% trypsin-0.025% EDTA-2Na in phosphate-buffered saline without Mg<sup>2+</sup> and Ca<sup>2+</sup> [PBS(-)] and subcultured at a 1:4 split ratio once a week, with a medium change between the subcultures.

**Assay for cytotoxic activity.** The cells were seeded (2.5×10<sup>3</sup> cells/well, 0.1 ml/well) in 96-microwell plates (Becton Dickinson and Company, Franklin Lakes, NJ, USA) and incubated for 48 h to allow cell attachment. Near-confluent cells were treated for 48 h with different concentrations of the test compounds in fresh medium. The relative viable cell number of adherent cells was then determined by the 3-[4,5-dimethylthiazol-2-yl]-2,5-diphenyltetrazolium bromide (MTT) method (5). In brief, control and treated cells were incubated for 4 h with 0.2 mg/ml of MTT in the culture medium. After removing the medium, the reaction product, formazan, was extracted with DMSO and the absorbance (corresponding to the relative viable cell number) was measured at 540 nm by a microplate reader (Multiskan Bichromatic Labsystems, Helsinki, Finland). The 50% cytotoxic concentration (CC<sub>50</sub>) was determined from the dose-response curve. The tumor-specificity (TS) was calculated by the following equation: TS=mean CC<sub>50</sub> (normal cells)/mean CC<sub>50</sub> (all tumor cell lines).

**Western blot analysis.** The cells were washed with PBS and resuspended in 50 mM Tris-HCl (pH 7.6), 150 mM NaCl, 1 mM EDTA, 0.1% SDS, 0.5% deoxycholic acid, 1% NP-40, and protease inhibitors (RIPA buffer). After ultrasonication using Bioruptor (UCD-250, Cosmo Bio Tokyo, Japan) for 12.5 min (10 s on, 20 s off) at the middle level of output (250 W) at 4°C. The soluble cellular extracts were recovered after centrifugation for 10 min at 16,000 × *g*. The protein concentration of each sample was determined using BCA Protein Assay Reagent Kit (Thermo Fisher Scientific Waltham, MA, USA), and cell extracts were subjected to western blot analysis. The blots were probed with primary antibody against PARP or caspase-3 followed by a horseradish peroxidase-conjugated secondary antibody. The immune complexes were visualized using Pierce Western Blotting Substrate Plus (Thermo Fisher Scientific). Western blot results were documented and quantified using ImageQuant LAS 500 (GE Healthcare Japan, Tokyo, Japan).

**Statistical treatment.** Experimental values are expressed as the mean±standard deviation (SD). Statistical analysis was performed by using Student's *t*-test. A *p*-value of less than 0.05 was considered to be significant.

## Results

**Isolation of active components.** During the search for candidate natural products for the treatment of oral cancer, methanolic extract of *A. paniculata* was found to show slightly higher cytotoxic activity against oral squamous cell carcinoma (HSC-2, HSC-3 and HSC-4) than human oral normal cells (HGF, HPLF, HPC), with an approximate TS of 3 (Table I). When the MeOH extract was partitioned with successive organic solvents, the EtOAc-soluble fraction had the strongest cytotoxicity. Therefore, the EtOAc-soluble fraction was further purified to yield three fractions. Among of them, Fr. 2 exhibited the strongest activity. Thus, Fr. 2 was further chromatographed to give corresponding fractions (Frs. 2-1, 2-2, 2-3, 2-4, 2.5, 2.6 and 2-7). The cytotoxicity and tumor-specificity of each fraction are shown in Table I.

Table I. Cytotoxicity of silica gel chromatography fractions prepared from the methanol extract of *Andrographis paniculata*. The cells were incubated for 48 h without or with test compounds and the 50% cytotoxic concentration ( $CC_{50}$ ) value was determined by 3-[4,5-dimethylthiazol-2-yl]-2,5-diphenyltetrazolium bromide method. Each value represents the mean of triplicate assays.

	$CC_{50}$ ( $\mu\text{g/ml}$ )								
	Human oral squamous cell carcinoma cell lines				Human normal oral cells				
	HSC-2	HSC-3	HSC-4	Mean	HGF	HPLF	HPC	Mean	TS
MeOH extr.	34 $\pm$ 15	26 $\pm$ 2	21 $\pm$ 7	28	67 $\pm$ 10	83 $\pm$ 26	72 $\pm$ 8	74	3
Fr. 2-1	36 $\pm$ 3	33 $\pm$ 2	29 $\pm$ 1	32	193 $\pm$ 3	161 $\pm$ 5	89 $\pm$ 2	148	5
Fr. 2-2	7 $\pm$ 1	5 $\pm$ 2	7 $\pm$ 1	5	41 $\pm$ 1	29 $\pm$ 0	12 $\pm$ 1	27	5
Fr. 2-3	11 $\pm$ 1	6 $\pm$ 0	7 $\pm$ 1	7	48 $\pm$ 3	29 $\pm$ 1	13 $\pm$ 5	30	4
Fr. 2-4	46 $\pm$ 5	39 $\pm$ 4	15 $\pm$ 2	36	98 $\pm$ 6	165 $\pm$ 5	>250	>171	5
Fr. 2-5	99 $\pm$ 6	182 $\pm$ 29	97 $\pm$ 10	112	>250	>250	243 $\pm$ 77	>248	2
Fr. 2-6	131 $\pm$ 9	213 $\pm$ 7	139 $\pm$ 18	145	>250	>250	>250	>250	2
Fr. 2-7	76 $\pm$ 2	134 $\pm$ 5	80 $\pm$ 10	84	>250	>250	208 $\pm$ 6	>236	3
5-FU	<8	36	24	23	>1000	>1000	>1000	>1000	>43
DXR	<0.06	0.21	0.08	0.12	>7.5	>7.5	>7.5	>7.5	>63

TS, Tumor-specificity index; HGF, human gingival fibroblast; HPC, human pulp cells; HPLF, human periodontal ligament fibroblast; DXR, doxorubicin; 5-FU, 5-fluorouracil.

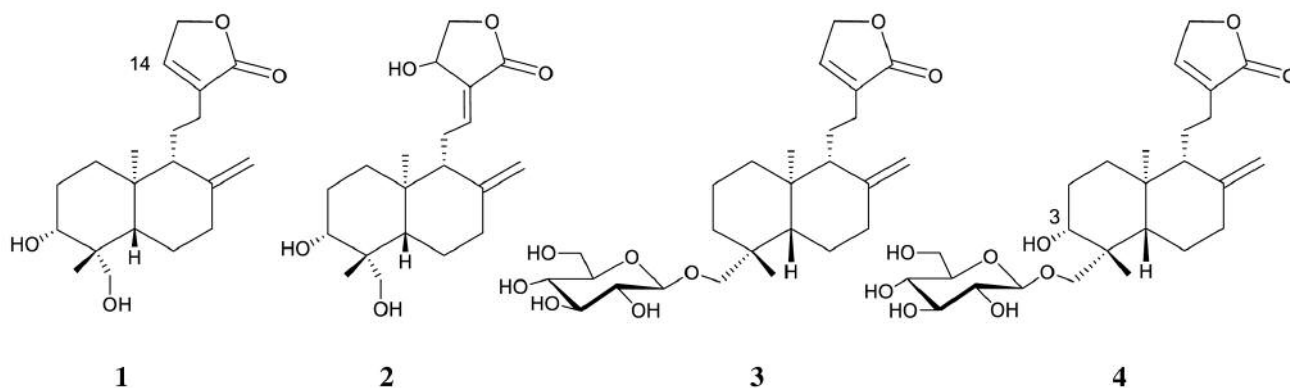


Figure 1. Structures of major cytotoxic compounds from the methanolic extract of *Andrographis paniculata*: 14-deoxyandrographolide [1], andrographolide [2], neoandrographolide [3] and deoxyandrographiside [4].

**Identification of isolated compounds 1-4.** Utilizing HPLC, major cytotoxic substances in Frs. 2-1, 2-2/2-3, 2-4 and 2-5 were isolated as compounds **1**, **2**, **3** and **4**, respectively. On the basis of spectroscopic analysis including NMR, MS and comparison with those described in the respective literature, these compounds were identified as 14-deoxyandrographolide [**1**] (6), andrographolide [**2**] (6), neoandrographolide [**3**] (7) and deoxyandrographiside [**4**] (8), respectively (Figure 1).

**Cytotoxic activities of isolated compounds.** The cytotoxicities of isolated compounds are shown in Table II. Among four

isolated compounds, andrographolide had the highest cytotoxicity against human oral squamous tumor cells (mean  $CC_{50}$ =8.0  $\mu\text{M}$ ) and the greatest tumor specificity (TS=9) (Table II). Neoandrographolide exhibited very weak cytotoxicity against both human tumor cells and normal cells. Deoxyandrographiside exhibited 2- to 3-fold lower cytotoxicity than deoxyandrographolide (Table II). Our preliminary study demonstrated that treatment of HSC-2 cells with 16 or 32  $\mu\text{M}$  andrographolide induced the cleavage of PARP and capase-3, suggesting the activation of caspase-3 (Figure 2).

Table II. Cytotoxicity of isolated compounds 1-4. The cells were incubated for 48 h without or with test compounds and the 50% cytotoxic concentration (CC<sub>50</sub>) value was determined by 3-[4,5-dimethylthiazol-2-yl]-2,5-diphenyltetrazolium bromide method. Each value represents the mean of triplicate assays.

	CC <sub>50</sub> (μM)								
	Human oral squamous cell carcinoma cell lines				Human normal oral cells				
	HSC-2	HSC-3	HSC-4	Mean	HGF	HPLF	HPC	Mean	TS
1	259±8.5	267±35.5	327±38.5	204	381±14.5	357±4.5	380±0.5	373	1
2	8±1.0	7±1.5	10±4.0	8.0	151±6.0	25±0.5	32±11.5	69	9
3	>1,000	>1,000	>1,000	>1,000	>1,000	>1,000	>1,000	>1,000	><1
4	509±19.5	489±1.0	729±7.0	576	>1000	943±57.5	>1000	>981	>2
DXR	0.39	0.45	0.31	0.38	7.5	7.5	6.0	7.0	18

TS, Tumor specificity index; HGF, human gingival fibroblast; HPC, human pulp cells; HPLF, human periodontal ligament fibroblast; DXR, doxorubicin.

## Discussion

The present study identified andrographolide as the major antitumor principle in the methanolic extract of the leaves of *A. paniculata*. During the purification of andrographolide, the TS value increased from 3 (methanolic extract), to 4-5 (EtOAc partition, followed by silica gel chromatography) to 9 (final purification step with reversed phase HPLC) (Tables I and II). For the determination of TS, we used human malignant (HSC-2, HSC-3, HSC-4) and non-malignant (HGF, HPLF, HPC) cells as target cells, since the TS value determined by the present method well correlated with their *in vivo* antitumor activity, regardless of different cell types (either epithelial or mesenchymal) (9). For example, 7-ethyl-10-hydroxycamptothecin (SN-38), the active metabolite of irinotecan used as clinical antitumor medicine, had a TS value of 808 by this assay method (10).

We next considered the structure-activity relationship of isolated components. The cytotoxicity of andrographolide against human oral squamous cell carcinoma cell lines (CC<sub>50</sub>=8 μM) was higher than that of 14-deoxyandrographolide (CC<sub>50</sub>=204 μM). The differences in chemical structure between these compounds are the position of the double bond on the tetrahydrofuran (endo- or exo-) and existence of a hydroxyl group connected at C-14. Thus, the hydroxyl group connected at C-14 and the position of the olefin bond are important for cytotoxicity against tumor cells. Furthermore, glycosylation of these diterpenoids significantly reduced their cytotoxic activity against tumor cells, as shown by the comparison of neoandrographolide (CC<sub>50</sub> >1,000 μM) and deoxyandrographiside (576 μM). Based on comparison of the structures of these glycosides, the existence of a hydroxyl group at the C-3 position is essential for their cytotoxicity.

The present study demonstrated the possible induction of apoptosis in HSC-2 cells by andrographolide. Although

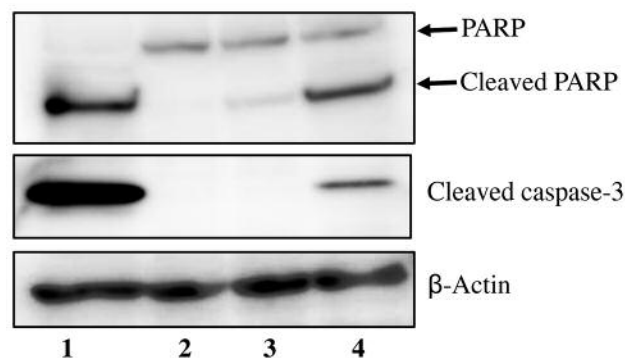


Figure 2. Induction of apoptosis by andrographolide [2] in HSC-2 cells. HSC-2 cells were treated for 24 h with actinomycin D (1 μM) (apoptosis-positive control) (lane 1), vehicle (negative control) (lane 2), andrographolide [2] (16, 32 μM) (lane 3, 4), and then processed for western blot analysis. PARP: Poly (ADP-ribose) polymerase.

induction of apoptosis by andrographolide via nuclear factor-kappa B inhibition has been reported (11-14), very few studies have dealt with its tumor specificity (15). It remains to be investigated why this compound exhibits tumor-selective cytotoxicity.

## Conflicts of Interest

The Authors confirm that there are no conflicts of interest associated with this publication and there has been no significant financial support for this work that could have influenced its outcome.

## Acknowledgements

This work was supported in part by Grant-in-Aid for Challenging Exploratory Research from The Ministry of Education, Culture, Sports, Science and Technology, research funds from Meikai University School of Dentistry (Sakagami H. 25670897).

**References**

- 1 Irani S: miRNAs signature in head and neck squamous cell carcinoma metastasis. *J Dent Shiraz Univ Med Sci* 17: 71-83, 2016.
- 2 Economopoulou P, Perisanidis C, Giotakis I E and Psyri A: The emerging role of immunotherapy in head and neck squamous cell carcinoma (HNSCC): anti-tumor immunity and clinical applications. *Ann Transl Med* 4: 173-185, 2016.
- 3 Ozi MJ, Suffredini BI, Paciencia M, Frana AS and Dib LL: *In vitro* cytotoxic effects of Brazilian plant extracts on squamous cell carcinoma of the oral cavity. *Braz Oral Res* 25: 519-525, 2011.
- 4 Kantoh K, Ono M, Nakamura Y, Nakamura Y, Hashimoto K, Sakagami H and Wakabayashi H: Hormetic and anti-radiation effects of tropolone-related compounds. *In Vivo* 24: 843-852, 2010.
- 5 Masuda Y, Ueda J, Tamura M, Sakagami H, Tomomura M, Tomomura A and Shirataki Y: Diverse biological activity of a Harvengtens 'Tutu' bulb extracts. *In Vivo* 25: 381-386, 2011.
- 6 Patra A, Mitra KA, Biswas S, Gupta DC, Basak A and Barua KA: Carbon-13 NMR spectral studies on some labdane diterpenoids. *Magn Reson Chem* 16: 75-77, 1981.
- 7 Srivastava N and Akhila A: Biosynthesis of andrographolide in *Andrographis paniculata*. *Phytochemistry* 71: 1298-1304, 2010.
- 8 Matsuda T, Kuroyanagi M, Sugiyama S, Umehara K, Ueno A and Nishi K: Cell differentiation-inducing diterpenes from *Andrographis paniculata* Nees. *Chem Pharm Bull* 42: 1216-1225, 1994.
- 9 Suzuki R, Matsuo S, Sakagami H, Okada Y and Shirataki Y: Search of new cytotoxic crude materials against human oral squamous cell carcinoma using NMR metabolomics. *Anticancer Res* 34: 4117-4120, 2014.
- 10 Tamura N, Hirano K, Kishino K, Hashimoto K, Amano O, Shimada J and Sakagami H: Analysis of type of cell death induced by topoisomerase inhibitor (SN-38) in human oral squamous cell carcinoma cell lines. *Anticancer Res* 32: 4823-4832, 2012.
- 11 Gao H and Wang J: Andrographolide inhibits multiple myeloma cells by inhibiting the TLR4/NF- $\kappa$ B signaling pathway. *Mol Med Rep* 13: 1827-1832, 2016.
- 12 Peng T, Hu M, Wu TT, Zhang C, Chen Z, Huang S and Zhou XH: Andrographolide suppresses proliferation of nasopharyngeal carcinoma cells *via* attenuating NF- $\kappa$ B pathway. *Biomed Res Int* 2015: 735056, 2015.
- 13 Pratheeshkumar P, Sheeja K and Kuttan G: Andrographolide induces apoptosis in B16F-10 melanoma cells by inhibiting NF- $\kappa$ B-mediated BCL-2 activation and modulating p53-induced caspase-3 gene expression. *Immunopharmacol Immunotoxicol* 34: 143-151, 2012.
- 14 Lee KC, Chang HH, Chung YH, and Lee TY: Andrographolide acts as an anti-inflammatory agent in LPS-stimulated RAW264.7 macrophages by inhibiting STAT3-mediated suppression of the NF- $\kappa$ B pathway. *J Ethnopharmacol* 135: 678-684, 2011.
- 15 Bundela S, Sharma A and Bisen PS: Potential Compounds for Oral Cancer Treatment: Resveratrol, Nimbolide, Lovastatin, Bortezomib, Vorinostat, Berberine, Pterostilbene, Deguelin, Andrographolide, and Colchicine. *PLoS One* 10: e0141719, 2015.

Received August 6, 2016

Revised August 31, 2016

Accepted September 5, 2016